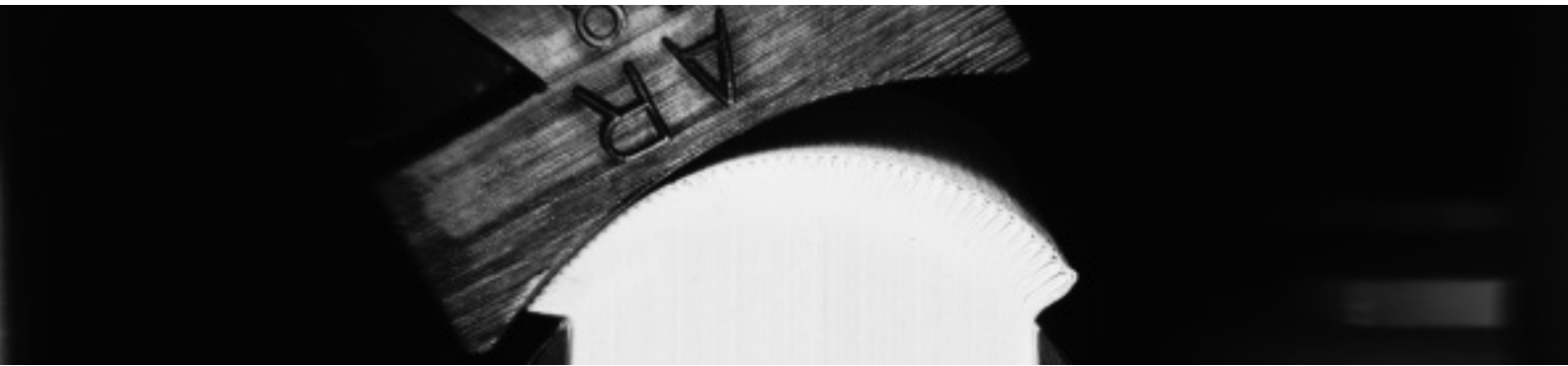


# Diamant MC Bookline

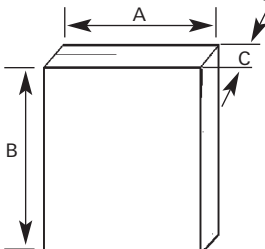
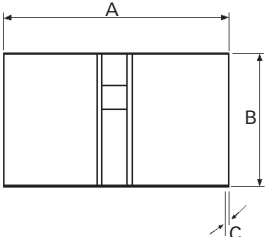
## Technical Data



### RHE Core Bookline

RHE 311, RHE 321 and RHE 322 are the core booklines of the Diamant MC 35.

RHE 611, RHE 621, RHE 622 and RHE 633 are the core booklines of the Diamant MC 60.

Mechanical Speed	Diamant MC 35	2100 cycles per hour		
	Diamant MC 60	3600 cycles per hour		
<b>Book Block Size Range</b> 		Maximum	Minimum	
	Standard Sizes	A	300 mm (11 3/4")**	100 mm (3 7/8")
		B	380 mm (15")	100 mm (3 7/8")
		C	80 mm (3 1/8")*	2 mm (1/16")
	Small Sizes (Option)	A		70 mm (2 13/16")
		B		100 mm (3 7/8")
		C	30 mm (1 1/4")	2 mm (1/16")
	Large Sizes (Option)	A	300 mm (11 3/4")	
		B	380 mm (15")	
		C	80 mm* (3 1/8")	
	* Block thickness depending on added case			
	** Starting from 270 mm (10 5/8") bookblock width only square back is possible.			
<b>Book Case</b> 		Maximum	Minimum	
	Standard Sizes	A	660 mm (26")	190 mm (7 1/2")
		B	390 mm (15 7/16")	105 mm (4 1/8")
		C	5 mm (3/16")	1 mm (1/32")
	Small Sizes (Option)	A		156 mm (6 3/32")
		B		105 mm (4 1/8")
		C		0.5 mm (1/64")
	<b>Compressed Air Consumption</b>	for RHE 311, RHE 321 and RHE 322:	28 Nm <sup>3</sup> /h at 6 bar	
		for RHE 611, RHE 621, RHE 622, RHE 633:	35 Nm <sup>3</sup> /h at 6 bar	

<b>Electrical Connection Values</b>	400/230 V, 50/60 Hz, 3 Ph	
<b>Power Consumption</b>	for RHE 311 and RHE 611:	20 kW
	for RHE 321, RHE 322, RHE 621, RHE 622:	26 kW
	for RHE 633:	30 kW

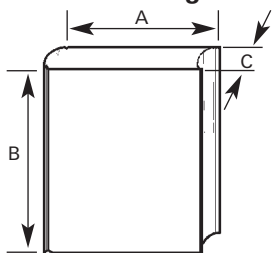
### EP Book Pressing and Joint Forming Machine

The EP 340 is the book pressing and joint forming machine of the Diamant MC 35.

The EP 680 is the book pressing and joint forming machine of the Diamant MC 60.

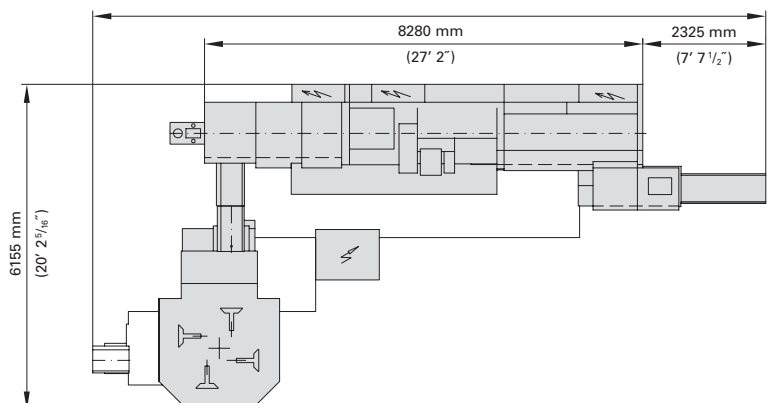
<b>Production Speed</b>	EP 340:	up to 2100 books per hour
	EP 680:	up to 3720 books per hour
<b>Mechanical Speed EP 680</b>	up to 2100 cycles per hour	

<b>Book Size Range</b>	Maximum		Minimum	
	A	308 mm (13 1/16")	70 mm (2 13/16")	
B	400 mm (15 3/4")	105 mm (4 1/16")		
C	90 mm (3 9/16")	5 mm (3/16")		



<b>Book Pressing Pressure (Controllable)</b>	15,000 to 20,000 N	
<b>Joint Forming Pressure (Controllable)</b>	500 to 2500 N	
<b>Compressed Air Requirements</b>	EP 340:	5 Nm <sup>3</sup> /h at 6 bar
	EP 680:	7 Nm <sup>3</sup> /h at 6 bar
<b>Electrical Connection Values</b>	400/230 V, 50/60 Hz, 3 Ph	
<b>Connected Load</b>	EP 340:	15 kW
	EP 680:	18 kW

### RHE 311 and EP 340

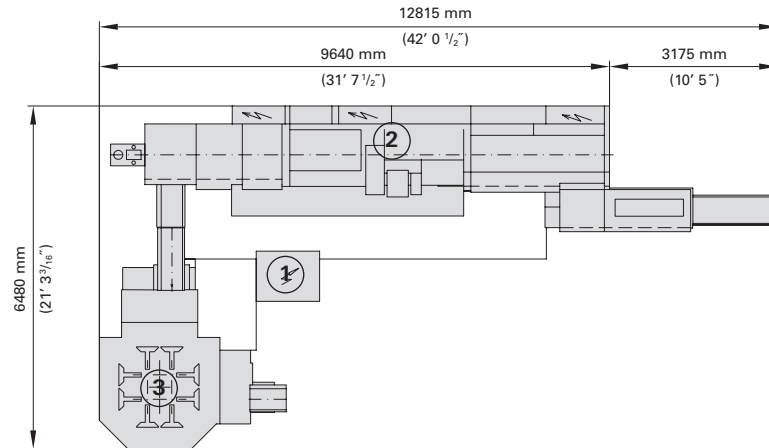


### Diamant MC – A Flexible Machine System

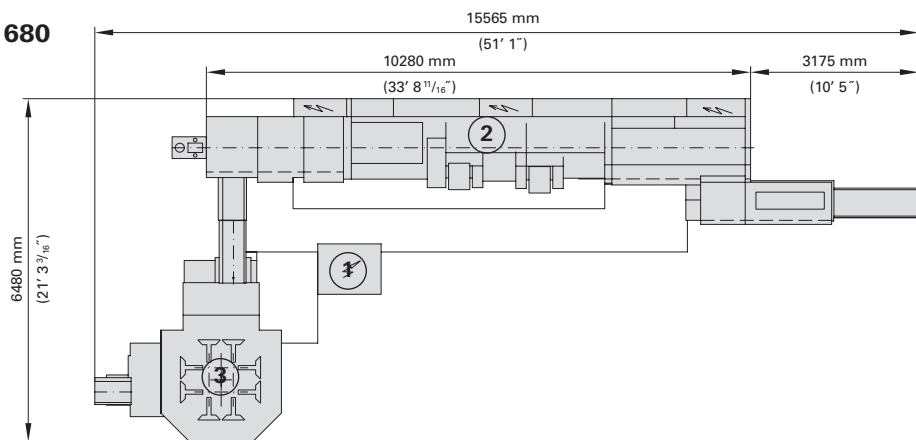
The Diamant is available in two performance versions with up to 2100 or 3600 books produced per hour. The RHE core bookline can be equipped with one, two or three gluing stations as required. The length of the machine depends on the chosen version.

- 1 Control console
- 2 RHE core bookline
- 3 EP book pressing and joint forming machine

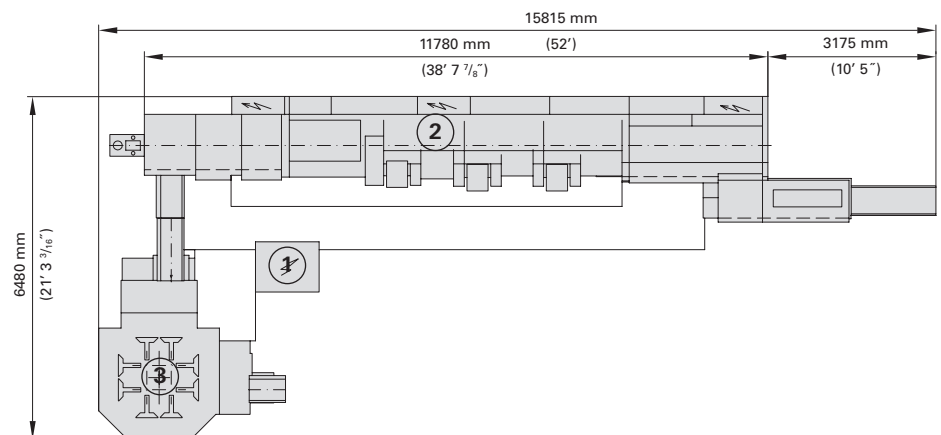
#### RHE 611 and EP 680

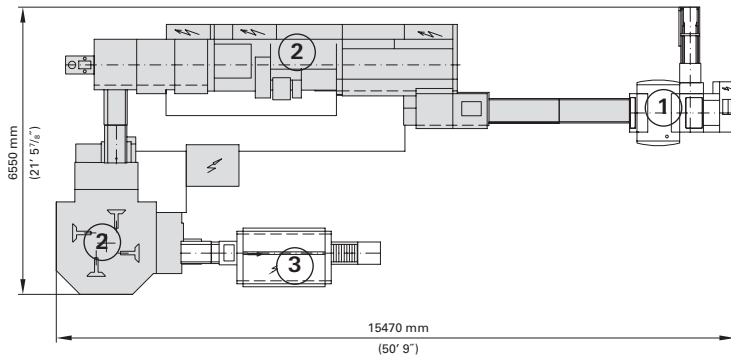


#### RHE 621, RHE 622 and EP 680



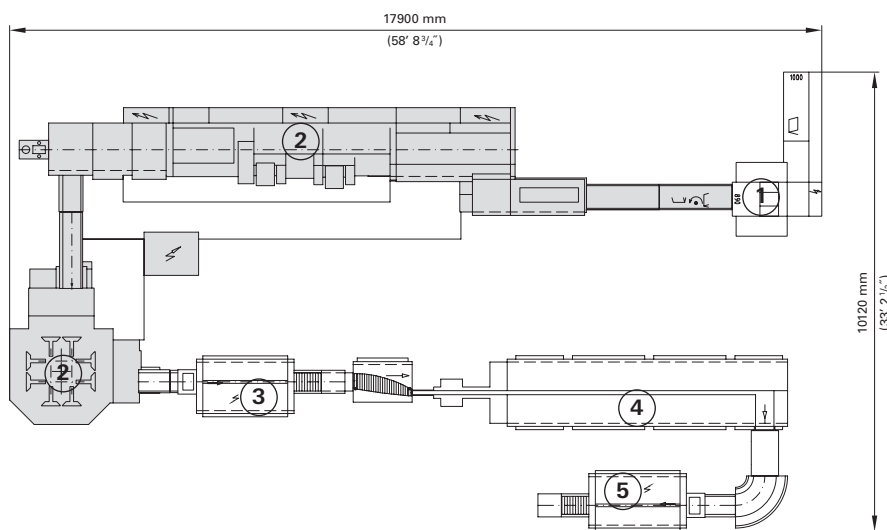
#### RHE 633 and EP 680





**Layout example with the Diamant MC 35:**

- 1 Esprit three-knife trimmer
- 2 Diamant MC 35 bookline
- 3 BLSD 650 book stacker



**Layout example with the Diamant MC 60:**

- 1 Merit S three-knife trimmer
- 2 Diamant MC 60 bookline
- 3 BLSD 650 D book stacker
- 4 Vesta jacking machine
- 5 BLSD 650 book stacker

Dimension, design and  
Configuration changes reserved.

Müller Martini Marketing AG  
Untere Brühlstrasse 13  
CH-4800 Zofingen, Switzerland  
Phone +41 (0)62 745 45 75  
Fax +41 (0)62 751 55 50  
info@mullermartini.com  
www.mullermartini.com